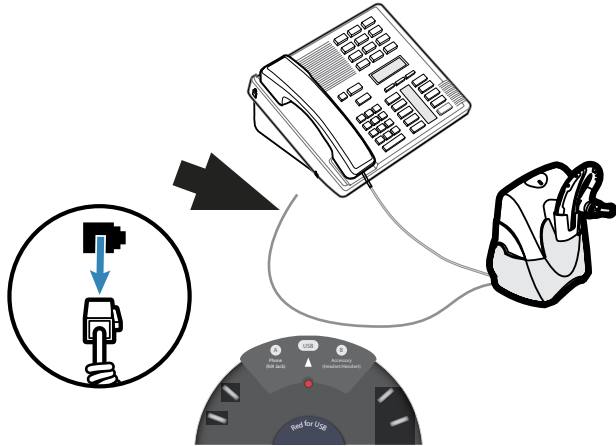


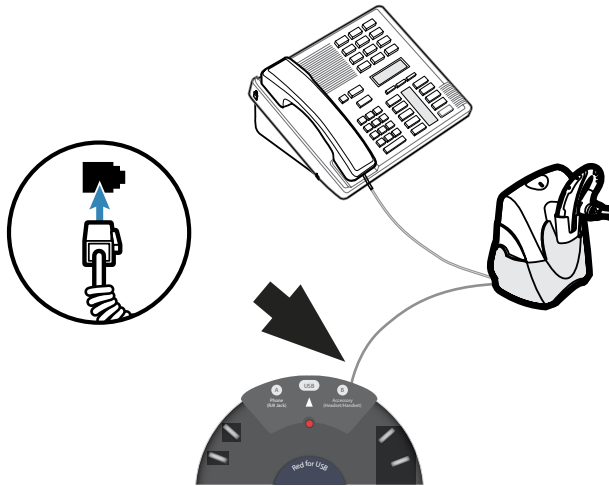
Set-Up Guide for ZoomSwitch™ Model ZMS20-UC



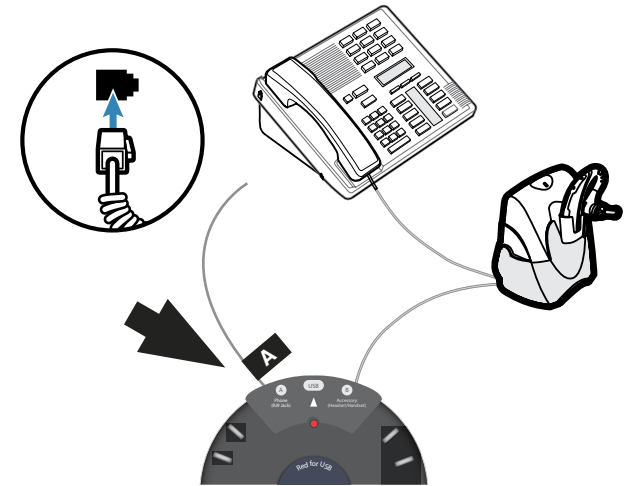
1 Unplug the cable that is currently connected to the left side or left underside of your telephone set (the other end will remain connected to your headset base or amplifier.)



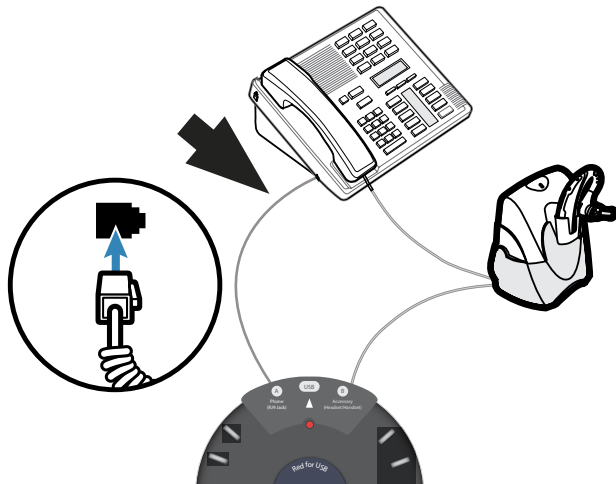
2 Plug the cable you just pulled out in Step 1 and plug it into the into the accessory port (port B) of the Zoom Switch.



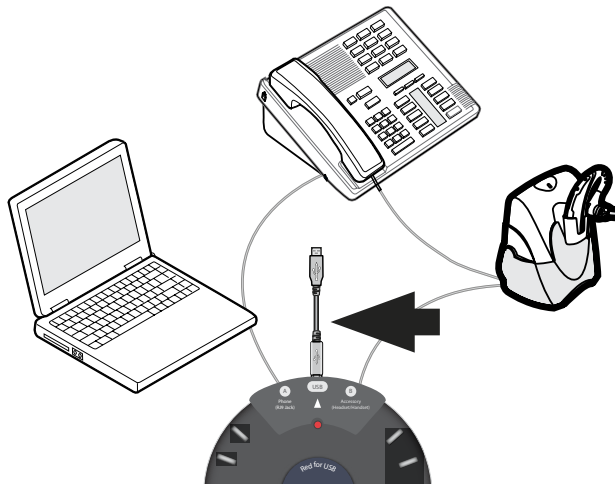
3 Take the black phone cable that comes with the Zoom Switch and plug the end labeled Port A into Port A of the Zoom Switch.



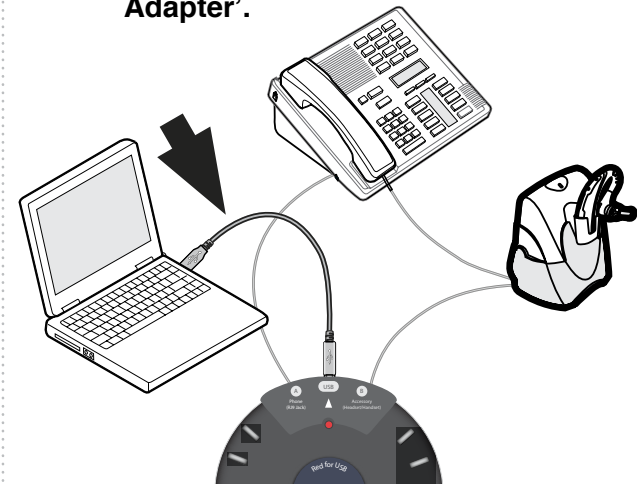
4 Plug the other side of the black phone cable (labelled phone) into your telephone.



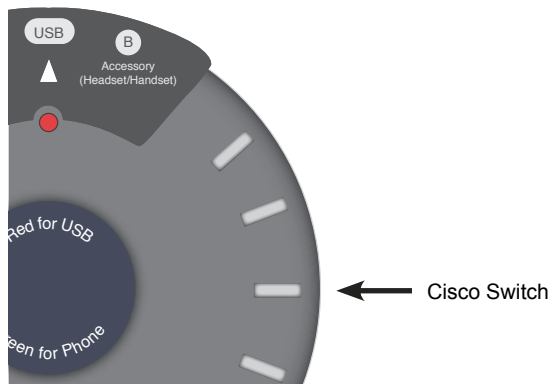
5 Plug the included USB cable into the Zoom Switch USB port.



6 Plug the other end of the USB cable into your computer's USB port. **Once connected, the device will be installed as 'ZoomSwitch USB Adapter'.**



7 If you are using a Cisco phone, make sure the switch located on the right side of the Zoom Switch is set to “Cisco”. For all other phone models, make sure the switch is set to “Normal”.

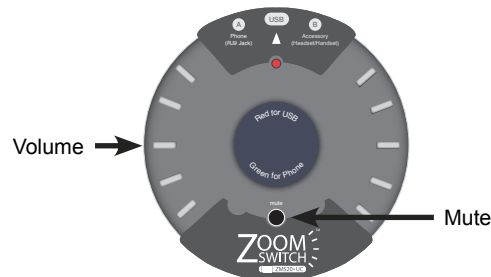


Mute:

If you cannot hear, verify that the Zoom Switch is not muted. A muted Zoom Switch is indicated by a flashing light.

Volume:

You can also adjust the volume using the dial located on the left side of the Zoom Switch.



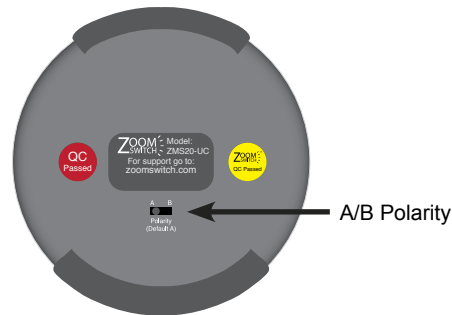
Testing:

Now that the Zoom Switch is set up, test it by making regular phone calls, listening, and talking through your computer.

To operate the Zoom Switch and move between the USB and phone lines, just push the large button in the center of the Zoom Switch. You will see the indicator light change accordingly.

Troubleshooting:

If you have trouble being heard on the USB side, you may need to change the position of the A/B polarity switch on the bottom of the Zoom Switch.



Still need help?

We will be happy to assist you.
Please contact us at:
support@zoomswitch.com
www.zoomswitch.com