



Blackwire® C210-M™/C220-M™ Quick Setup Guide

Welcome:

Using a Plantronics Blackwire headset for PC calls will deliver a simpler, more comfortable and better sounding audio experience than you could get using just your computer's internal microphone and speaker.



*This picture shows the Stereo (C220-M) version

Control Functions:

- A. Mute Microphone
- B. Volume Adjust
- C. Call Answer/End

Blackwire C210-M/C220-M Key Features:

- Wideband for best-in-class PC audio
- Noise-canceling microphone filters out background noise
- Digital Signal Processing (DSP) technology provides more natural voice sound
- Monaural (C210-M), Stereo (C220-M)

OPTIMIZED FOR
Microsoft® Lync™

Getting started:

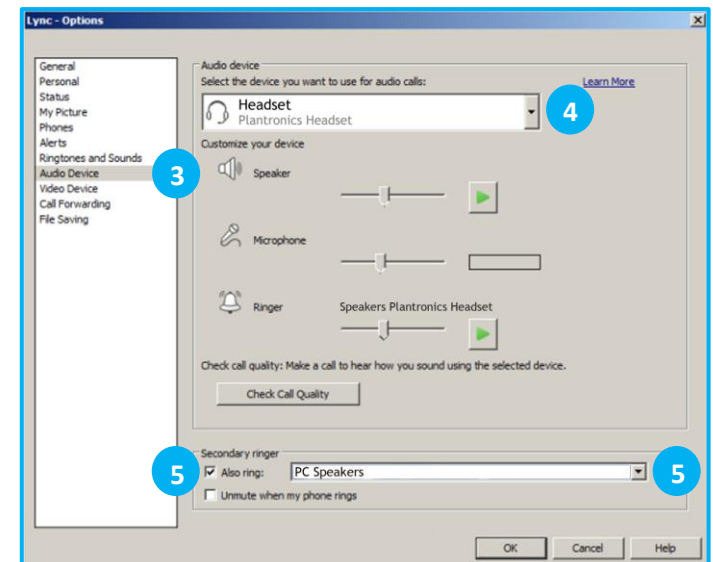
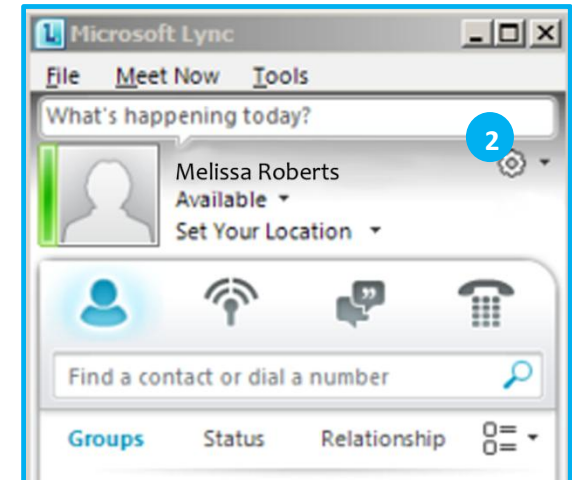
The Plantronics Blackwire headset is ready to use with your computer and **Microsoft® Lync™**.

1. Connect your headset to the computer.
If this is the first time you are connecting the headset, wait for the installation process to complete. Restart the computer if directed to do so.

Configuring Microsoft Lync to always route call audio to the headset:

2. Click on the Options button in the main Microsoft Lync window.
3. Select the **Audio Device** option.
4. Choose your Plantronics headset for **Audio Device**.
5. Check the **Also Ring** box for **Secondary Ringer** and choose your PC speakers from the drop down menu if you would like them to ring for incoming calls.
6. In this screen you can also test and adjust volumes.
7. Click **OK** when finished.

Note: USB configuration settings are unique for each USB port. If you connect the headset to a different port you will need to make these changes again to set behavior for that USB port.



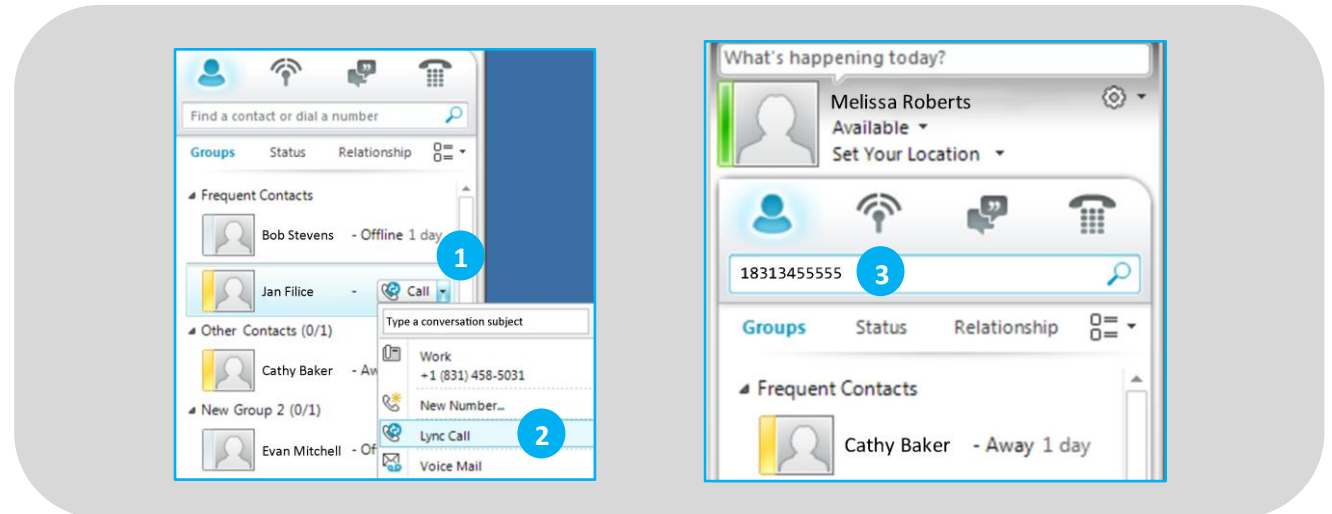
Making and Receiving Calls with Microsoft Lync

To MAKE a call:

To call an existing contact, click on the drop down next to their name (1) and select the number you would like to call (2).

You can also enter a phone number manually using the search box located at the top of the main Microsoft Lync screen (3).

When a call is placed, a call window will open and the audio will be routed to your headset.



To RECEIVE a call:

When you receive a call, a notification window will appear in the lower right corner of your computer screen (4).

To answer the call, use the controls on your headset or click on the call notification window (5).

To REDIRECT a call:

You can also redirect a call by clicking **Redirect** (6) and choosing one of the options given.

